

Inquiry Order

Customer number: _____

Company stamp / address:

Contact person: _____

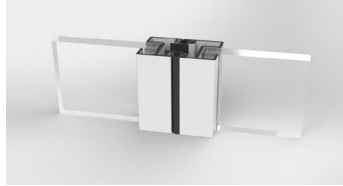
Telephone: _____

Quotation No.: _____

Commission: _____

All-glass system

framed Aluminium system



Number of systems: _____

Corner angles 90° - 180°: _____ pieces

Opening direction: inwards folding

outwards folding

(Note: Use interior view!)

Dimensions: Width: _____ (Total unfolding)

Height: _____ (incl. possible floor recession)

Number of panel _____ to the left

_____ to the right

Colour: RAL _____

E6-EV1

DB703

DB703FS

Special colour: _____

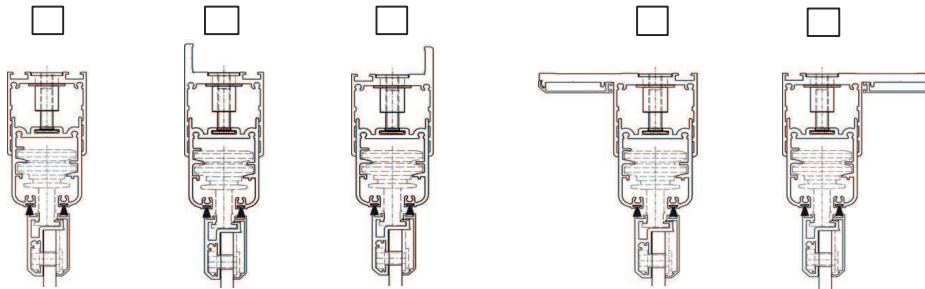
Pre anodizing

Glazing: 8 mm tempered glass, clear with Heat-Soak-Test

10 mm tempered glass, clear with Heat-Soak-Test

12 mm temp. glass, Special glass: clear with Heat-Soak-Test _____

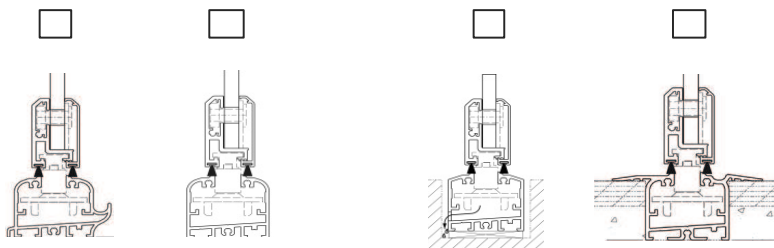
Height compensation profile:



(Indicate height exclusive vertical flange)

left = outside / right = inside

Bottom track:



EV1 (standard)
 RAL _____

(Indicate height inclusive floor recession)

Rail extension: right length L _____ mm left length L _____ mm

Operation/Handle:



- Turning knob (Standard) Door fitting
 inside inside and outside with PZ without PZ
(not possible with side aluminium panel profile)


Handle height: H = _____ (Indicate handle height from lower panel edge) Special color _____



- with half profile cylinder
 with PZ inside + outside



- with half profile cylinder
 with PZ inside + outside

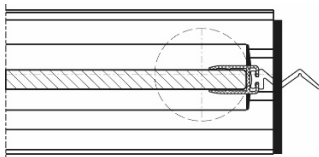
- Flush handle with shoot-bolt lock Side locking with flat handle
 Flush handle with shoot-bolt lock inside + outside Side locking with flat handle inside + outside
  with plastic knob on the turning panel

Lever lock: yes

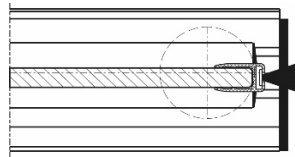
Storm lock: yes

Wall connection left and right:

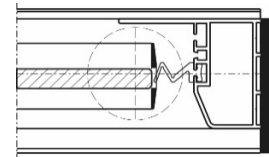
- with rubber gasket
(not possible with lateral aluminium profile)



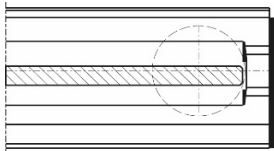
- with brush gasket
(not possible with lateral aluminium profile)



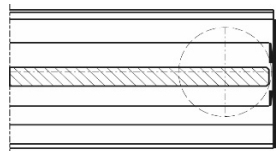
- lateral wall connection



- without wall connection, glass non flush
(not possible with lateral aluminium profile)



- without wall connection, flush glass
(not possible with lateral aluminium profile)



- in EV1 (Standard)
 in RAL _____

PVC gap gasket:



- 1 piece per panel joint
(not possible with lateral aluminium profile)

Please enclose floor plan resp. view sketch and remarks (please use inside view)